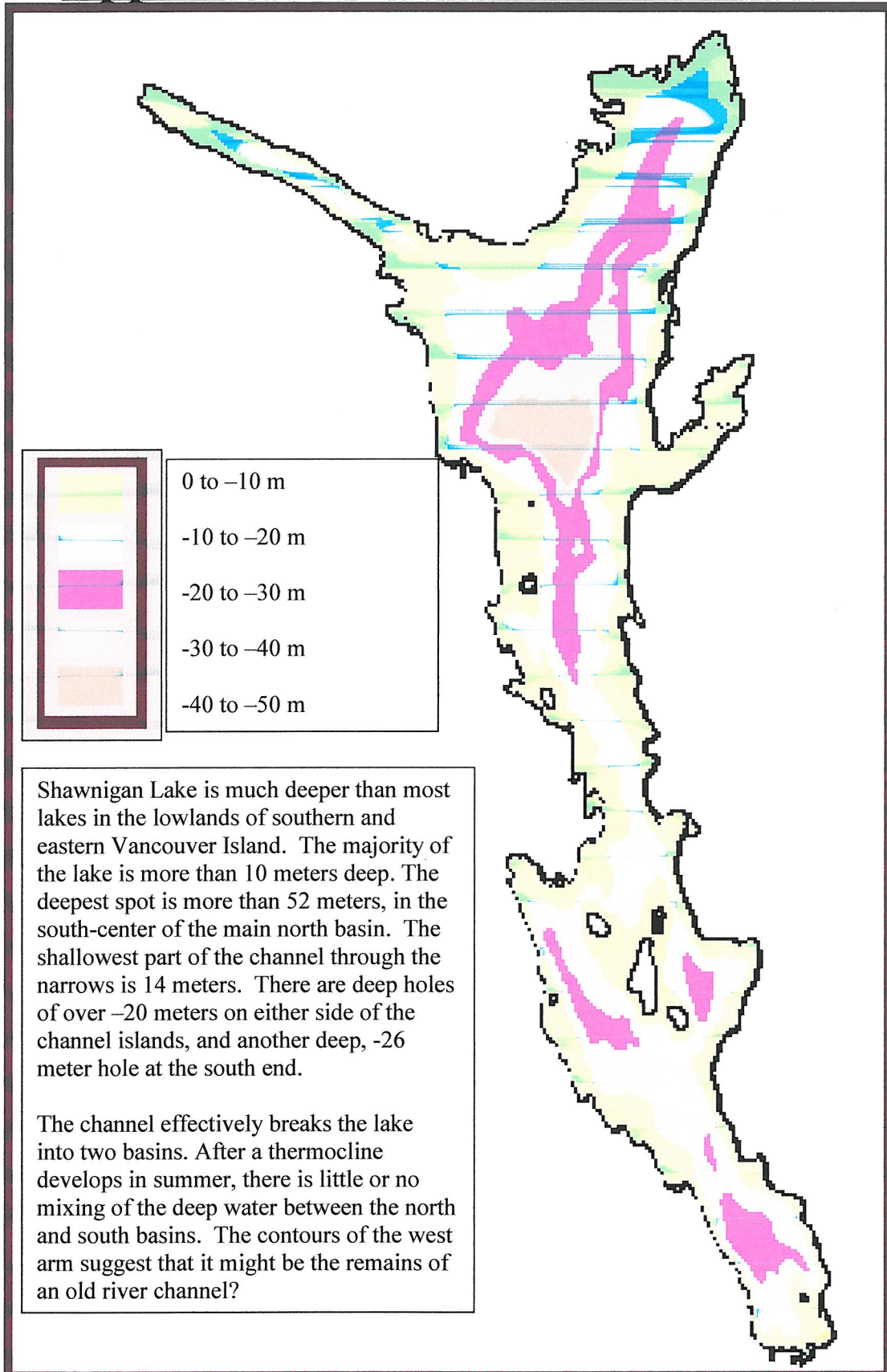


Appendix 6: Shawnigan Lake Bathymetry



Shawnigan Lake is much deeper than most lakes in the lowlands of southern and eastern Vancouver Island. The majority of the lake is more than 10 meters deep. The deepest spot is more than 52 meters, in the south-center of the main north basin. The shallowest part of the channel through the narrows is 14 meters. There are deep holes of over -20 meters on either side of the channel islands, and another deep, -26 meter hole at the south end.

The channel effectively breaks the lake into two basins. After a thermocline develops in summer, there is little or no mixing of the deep water between the north and south basins. The contours of the west arm suggest that it might be the remains of an old river channel!